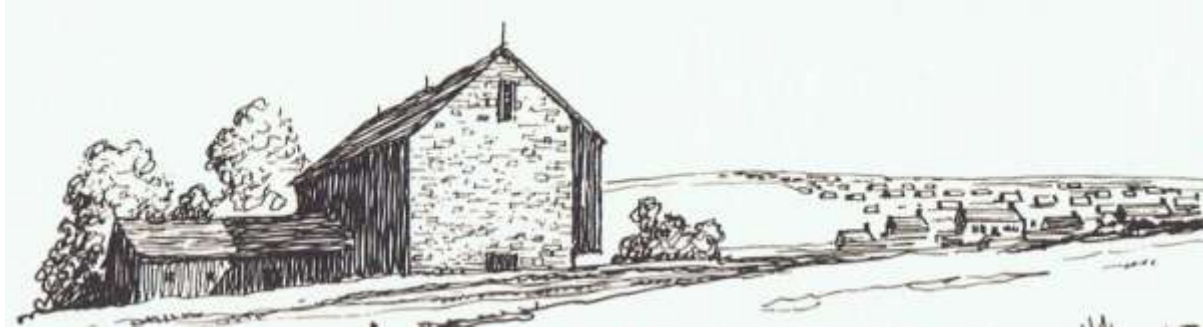


# Antique Barns for Reconstruction, 26'- 28' Wide

**All of the Individual Buildings you will see below are “Resurrection-Ready”!**



## **Progress Encroaching on Magnificent Buildings: Welcome the story of Glorious Resurrection!**

The buildings you see here are ready to be reconstructed wherever you say. They're all yours! They are here because, yes, they have been threatened by the bulldozer. They have been either physically removed to *temporary safety* by an AGN Network Professional or are still standing under their watchful eye, “under contract in the field”, in hopes of adoption. They are all *temporarily* “saved”. None of them are *really* saved until they are adopted by a citizen-steward or a designer to be reconstructed into a new future, in a new location.

The Buildings you see here are “Resurrection Ready”. They get documented, numbered and tagged, meticulously and methodically deconstructed, whisked away to safety, repaired and placed in watchful storage by trained Network Professionals. Some have been freshly rescued. Some are still standing. Some have been lingering in storage for years. Storage tends to cost insistent dollars and is not to be viewed as a perpetual solution. The AGN Network Professionals are footing those bills for us right now.

But we have an idea.....(continued at the bottom of the page)

Let's look at buildings now.



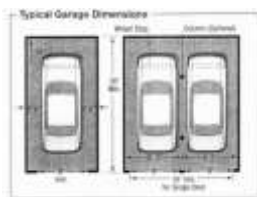
## 26'-28' Wide Barns

|         |                              |
|---------|------------------------------|
| 26 x 36 | Patterson Gambrel            |
| 26 x 36 | Ames                         |
| 26 x 36 | Middleburgh                  |
| 26 x 36 | Ripon                        |
| 26 x 53 | The Creek                    |
|         |                              |
| 27 x 40 | The Heath Carriage House     |
| 27 x 51 | Howard's Grove               |
|         |                              |
| 28 x 30 | MacIntyre                    |
| 28 x 30 | New England Carriage Barn    |
| 28 x 32 | Bank Barn                    |
| 28 x 35 | Decker Barn                  |
| 28 x 36 | 1773 English Hewed & Scribed |
| 28 x 40 | Fryer Wagon shed             |

## Here are some Sizes for references. Have fun looking at these Barns!

**Floor Plans that represent sample minimum dimensions for you to play with as you look at Building Frames**

Scroll down to the bottom of the page to see larger versions of these schematics for more visual detail.



**Garage**  
20' x 24'



**Workshop**  
12' x 24'



**Two Stall Stable +**  
24' x 36'

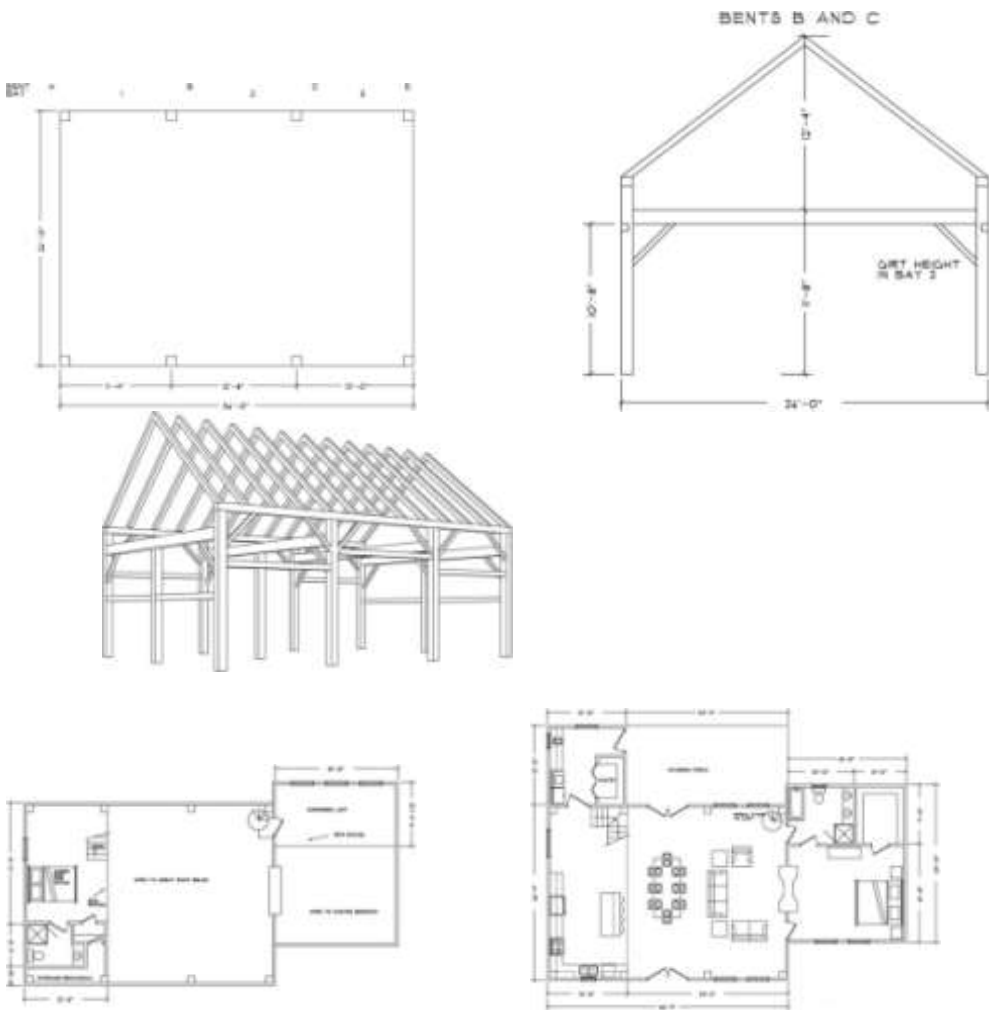


**Potting Shed**  
10' X 6'



**Equipment Shed**  
8' x 10'



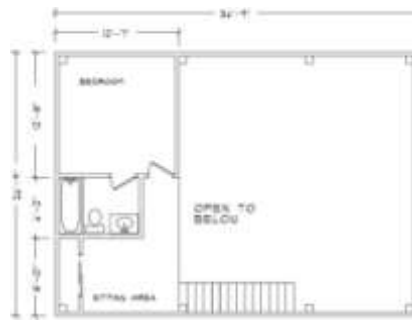
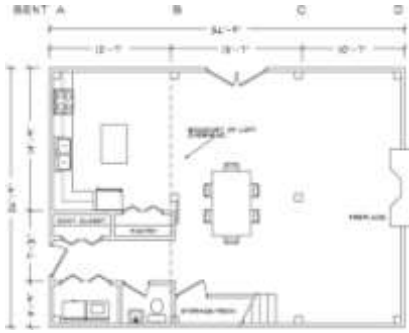
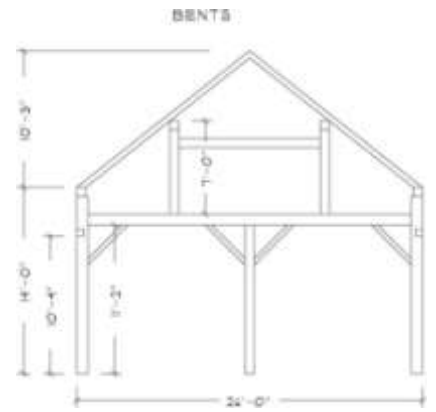
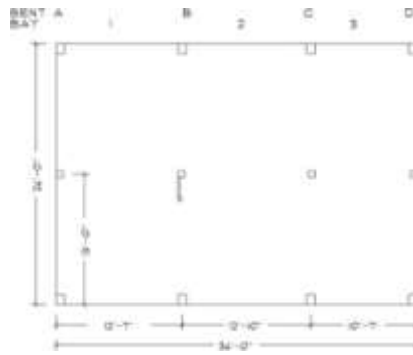
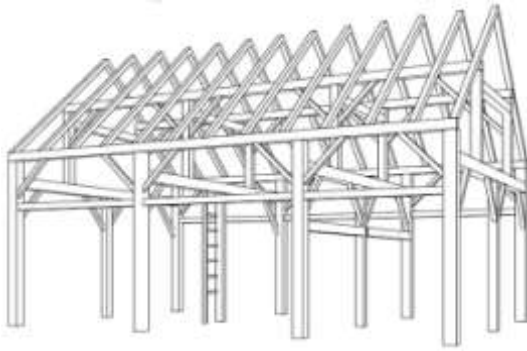


**The Ames**  
 1830  
 26 x 36  
 14' to top plate  
 Posts: 9 x 10

---

**The Middleburgh**





**The Middleburgh**

1820

26 x 36

Eave Height 14'

Hand Hewn Hemlock 10" x 12"

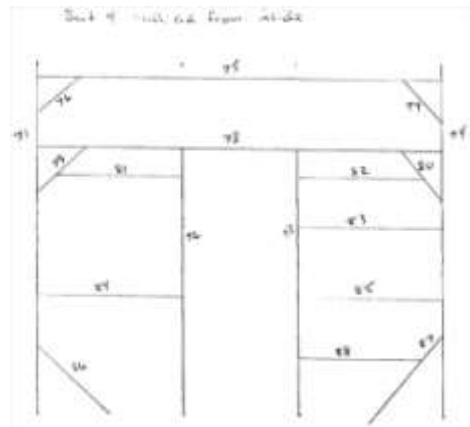
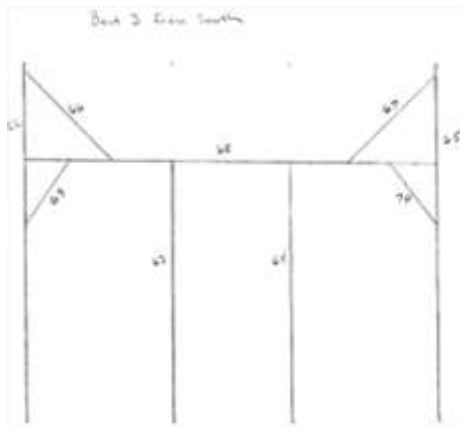
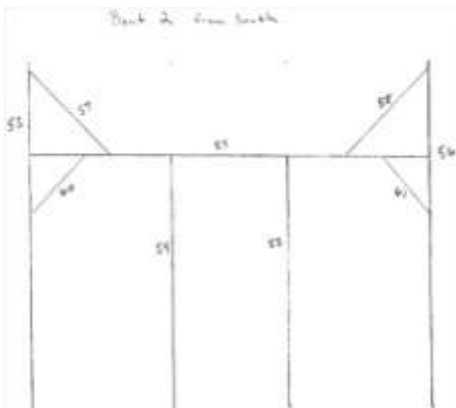
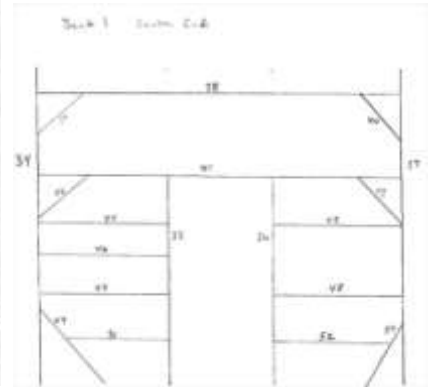
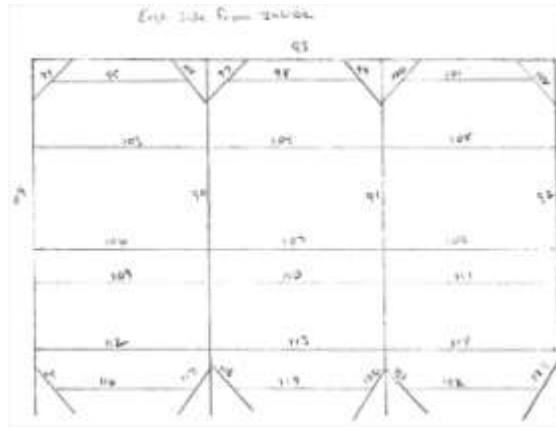
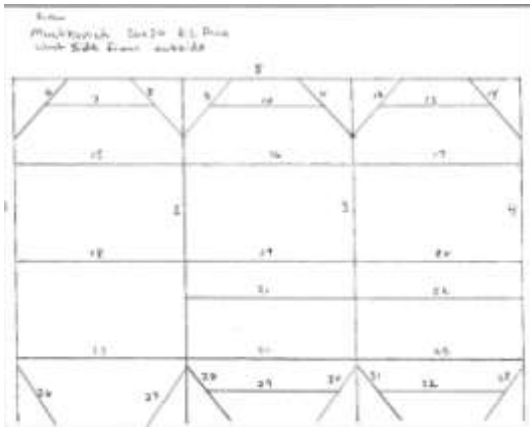
This traditional English Barn has more clearance upstairs than is typical of a barn this size.



**The Ripon**

26 x 36





**The Ripon**

**26 x 36**

Rough Sawn Pine Frame

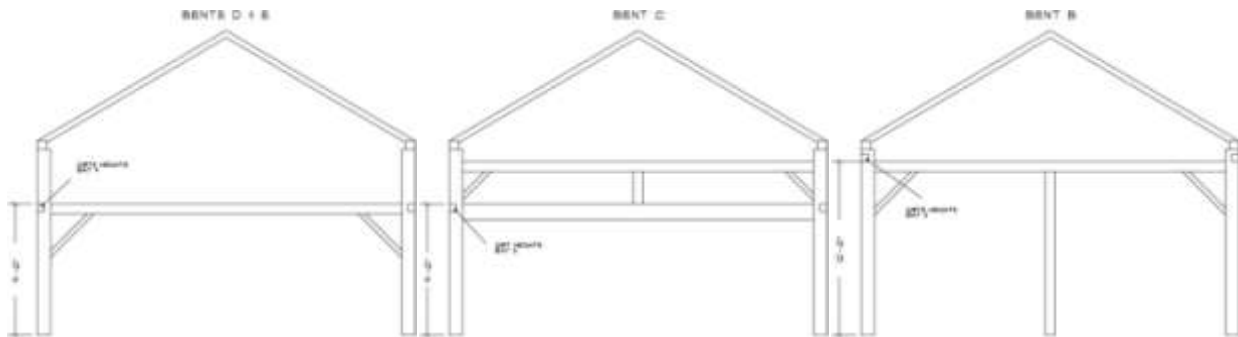
Timbers are 8" x 8" and 8" x 12"

Upper Floor Joists are 3" x 8", Lower Joists are 4" x 8"



**Lawton Hollow**

**26 x 52' 6"**



**The Lawton Hollow**

**26 x 52' 6"**

1830

Hand Hewn with very heavy 12" x 12" timbers

Main Swing Beam is 12" x 14"

Good Loft area from bent C to Bent E



## The Creek



## The Creek

Center Bay Barn

26 x 53

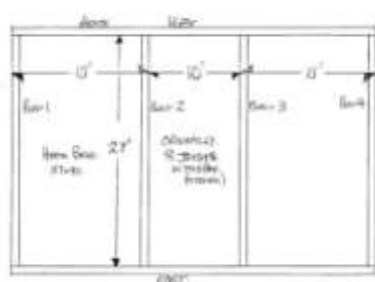
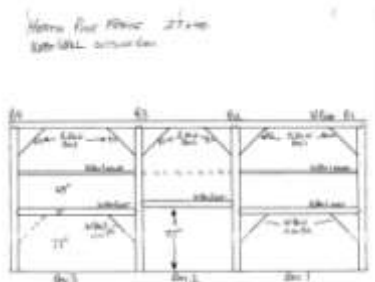
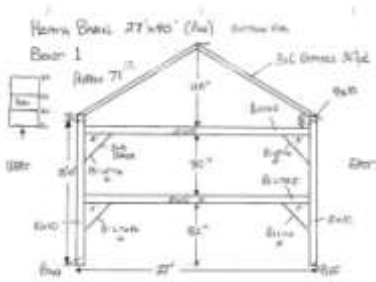
8 x 8 and 8 x 10 Hand Hewn Posts

17' 8" to top plate

---

## The Heath Carriage House





**The Heath Carriage House**

**27 x 40**

Hand Hewn White Pine, Beautiful Honey Color

3 Bays 15'-10' and 15'

10" x 10" Posts; 10" x 11" Tie Beams

8" x 8" Hand Hewn Girts

9" x 10" Rafter Plates

Total Height 16' 8"

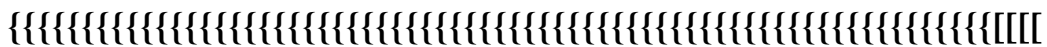
3" s 6" Rafters at 3' Centers

Double Tie Beam

Great side wall Height for loft space

Bents are at a good location for loft space

80" between tie beams; enough space for headroom walkabout



**Howard's Grove**

**27 x 51**





## 1870 New England Carriage Barn

28 x 30

Hewn and Sawn Pine, Spruce and Hemlock  
Full second floor-bottom of tie beam is 8'6"

12' 6" eave wall height

4 bents on 10' centers

Ground to Peak is 25'

Roof Pitch 10/12

Joist are laid over the tie beams- could easily be lifted- simple to open to rafters

Softwood-hemlock, spruce, red pine

Common rafters

Queen post – 4 main rafters

6 x 7 Posts

---

## Bank Barn





Date Stone

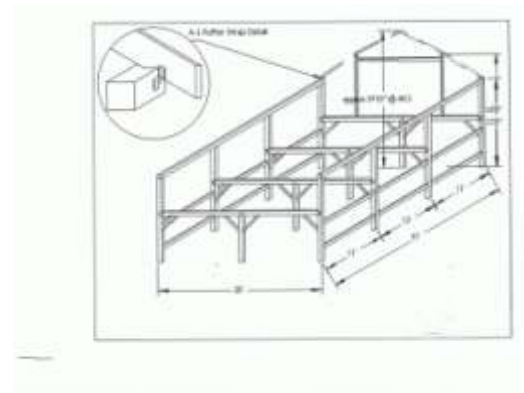
## Bank Barn

28 x 32 x 13' 6"

Beams 7" x 8"

Posts: Sawn- 6 x 6, 6 x 7, 6 x 8

## The Dekker Barn



## The Decker Barn

28 x 35

Hand Hewn Hemlock & Pine

7 x 7 posts, 8 x 8x girts

Queen Posts and Purlins 6 x 6 Hand Hewn

This is actually two barns that have been put together, one of which is a gambrel and one a gable. They will be separated and sold separately

---

## 1773 English Hewed & Scribed

28 x 36



## 1773 English Hewed & Scribed

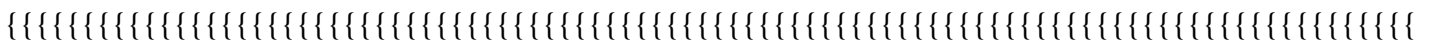
28 x 36

9.75/12 Roof Pitch

Mixed Hardwood

Amazing Birdseye Maple Tie Beam

11' from sill to eve



---

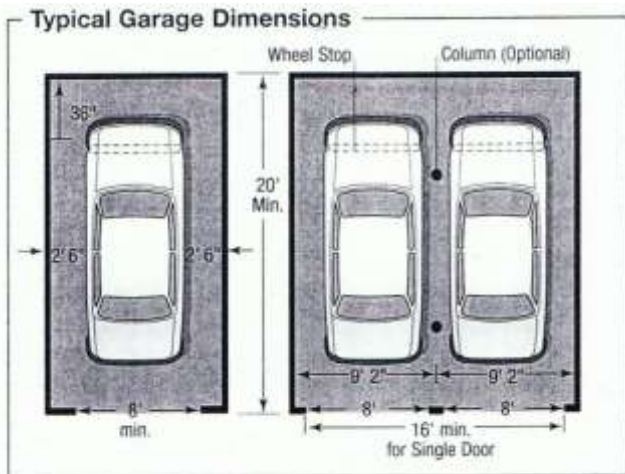
## The Fryer Wagon Shed



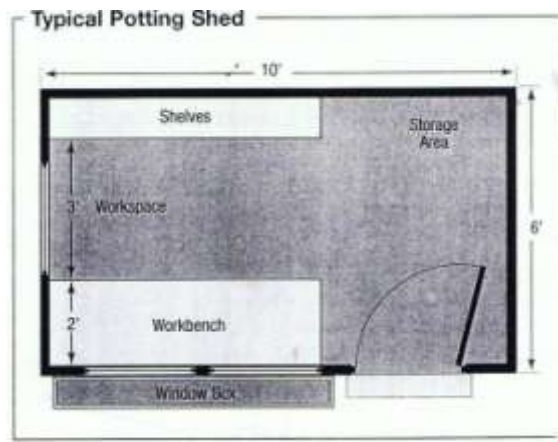
**The Fryer Wagon Shed**  
Clear Span: No Center Posts!  
28' x 40'  
Oak

Rough Sawn Beams, Top Beams are Hewn  
The side aisles are not structural and may, but need not, be retained  
Original Floors and Doors are available  
Comes with rafters (not pictured)

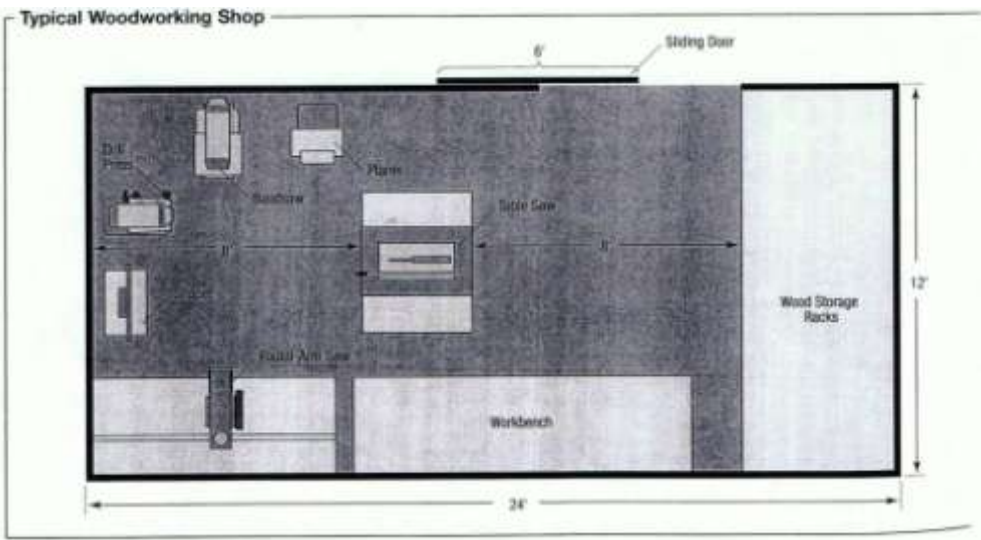
**Floor Plans that represent minimum dimensions for you to play with as you look at Building Frames. If you want to see these schematics larger, feel free to email me: [jonaharvey@comcast.net](mailto:jonaharvey@comcast.net)**



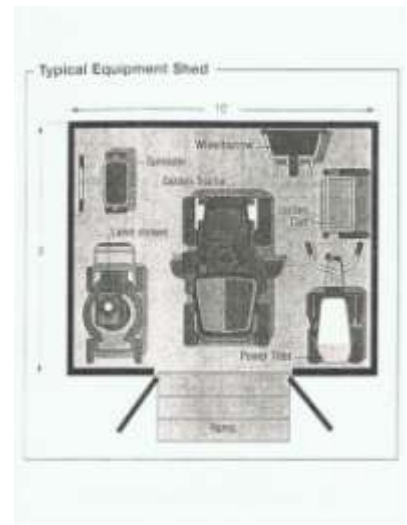
**Garage 20' x 24' minimum for 3 Car Garage,  
20' x 12' for 2 Car Garage**



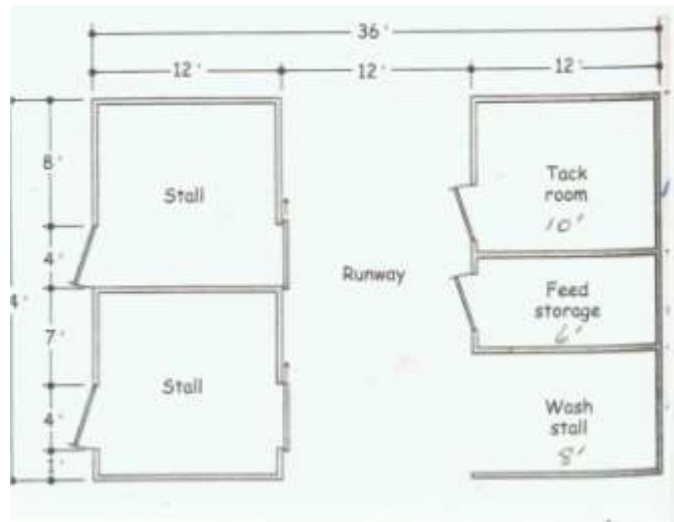
**Potting Shed  
10' x 6'**



**WoodWorking or Hobby Shop 12' x 24'**



**Equipment Shed 8' x 10'**



**Two Stall Stable with Tack Room, Wash Stall and Feed Area  
24' x 36'**



**All of these Individual Buildings are “Resurrection-Ready”!**



**Progress Encroaching on Magnificent Buildings: Welcome the story of Glorious Resurrection!**

The buildings you see here are ready to be reconstructed wherever you say. They’re all yours! They are here because, yes, they have been threatened by the bulldozer. They have been either physically removed to *temporary safety* by an AGN Network Professional or are still standing under their watchful eye, “under contract in the field”, in hopes of adoption. They are all *temporarily* “saved”. None of them are *really* saved until they are adopted by a citizen-steward or a designer to be reconstructed into a new future, in a new location.

If no one comes forward, many scenarios ensue, Some of these buildings may be “partially saved”; that is; they will be deconstructed for partition, that is, for their parts, which will be used to provide fabulous American Pioneer Texture Décor in *New to Look Old* Home Construction. Many heritage buildings will be destroyed by comprehensive demolition. Some will completely and irrevocably collapse in a dangerous heap from private financial struggle; re-roofing a huge barn for a retired farmer who is no longer using the building is dauntingly expensive. In that case, yes, snapped, craftsman-created heritage hand hewed timbers *do* go to landfill.

The Buildings you see here are “Resurrection Ready”. They get documented, numbered and tagged, meticulously and methodically deconstructed, whisked away to safety, repaired and placed in watchful storage by trained Network Professionals. Some have been freshly rescued. Some are still standing. Some have been lingering in storage for years. Storage tends to cost insistent dollars and is not to be viewed as a perpetual solution. The AGN Network Professionals are footing those bills for us right now.

But we have an idea.

Yes, it’s awful when civilization encroaches and an Antique Heritage Icon is destroyed in order to make room for “progress”. ”Ain’t it Awful?” is a valid tale of woe. Destruction is currently the standing default American Solution to suburban sprawl. Yet, here is a beginning thought to the depository on this issue: Instead of *fighting* this trend of geographically re-shuffling populations, perhaps strengthening the protocol of deconstructing and reconstructing displaced antique buildings in order to save them can become accepted common practice.. We could easily slot the Reconstruction of Antique Buildings gracefully and effortlessly into corresponding New Old House “Best Practices” in this country.

Progress is a factoid of life for good reasons. Creating Antique Architecture Migrations in positive response to inevitable Population Migrations in a harmonious way is a global trend we can embrace with our nifty new Reconstruction Preservation Protocol! In fact, the United States could Pioneer this Movement worldwide! We’re World Famous for the Pioneering, Melting Pot thing already.

These homeless buildings represent our American Heritage and the Pioneer Struggle of the Rugged Individuals who *literally* “built” this country with the Yankee Know-How they imported from cultures worldwide. It’s not necessary to helplessly stand by saying “Ain’t it Awful?” That’s beneath the Pioneer Spirit! Progress is here to stay and we need to create a pro-active response to it. We can honor our venerable homesteading pioneers with a pioneer homesteading protocol: a Resurrection Explosion. (Reconstruction has been happening since Medieval times. It “ain’t that hard”....)

We can Reshuffle and Relocate these magnificent buildings as an ordinary part of our “New to Look Old” Best Practices to meet the population shifts of modern and future times!

Yes or Yes, America?

For further conceptual reaches on this issue, and some ideas about why it’s *not* common practice, consult our News Page and share your ideas! We need ‘em!



## **A Reconstructed Antique Building!**

### **The New Old House!**

**All the advantages of New and all the Charm of the Genuine Antique!**  
**This is your chance to bring the building into good order for the future!**  
**You are the Steward of this sacred moment!**

If you are reconstructing an antique building, you are in the wondrous position of having all the advantages of a brand new home and all the privileges, charm and mystic of an antique building! You lucky duck!

While the antique building is theoretically “open to suggestion” before its reconstruction period, you are in the enviable position of being able to design all and any of the energy saving luxuries and modern living necessities currently in invention into its future. Your due diligence at this point will help to ensure that the building will be beloved well into the future! Thanks!



**Click our Catalog Icon:**

**Back to the Future, Forward to the Future**

**Primitive Whole House Lighting Ambiance**

**Wire for it now!**

**What else would you like to arrange for this building’s future?**



# Architectural Global Network

The National "Go To Source"

Jona Harvey

[www.GoToAGN.com](http://www.GoToAGN.com)

610-565-4594 – Office, Yes, we're national!

610-247-1253 - Cell

888-807-1842 - Toll Free

[FindIt@GoToAGN.com](mailto:FindIt@GoToAGN.com)

AGN is going Global

