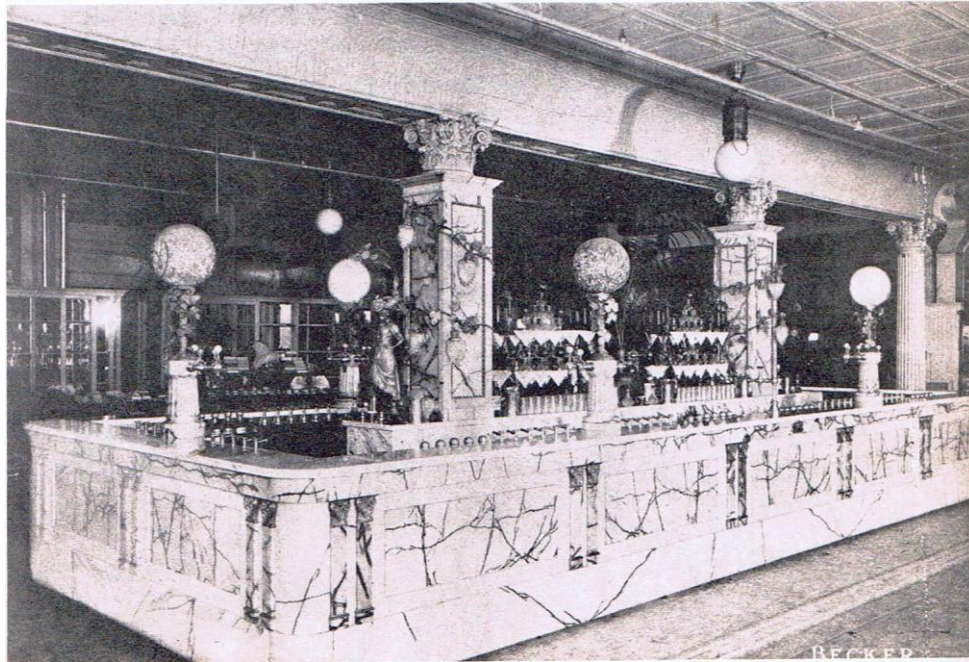


# Architectural Antiques BackBars

**There are hundreds of Antique Back Bars of multiple periods available all over the country!  
Many of them will appear on this page very soon.**

**Meanwhile, let us know what's on your wish list; we'll source it for you**



**early 1900's drugstore cabinets**



early 1900's drugstore cabinets.....36 ft oak cabinets  
sliding glass doors on tops with mirrored backs  
8 ft. tall

### Walnut Soda Fountain Backbar



Walnut Soda Fountain Backbar includes.....  
only top mirrored portion available  
measurements are 66" tall, 13" deep and 10ft long  
mirror will probably need to be re-silvered  
2 pieces of the stained glass are cracked but replaceable

## Architectural Global Network

The National "Go To Source"

Jona Harvey

[www.GoToAGN.com](http://www.GoToAGN.com)

610-565-4594 – Office, Yes, we're national!

610-247-1253 - Cell

888-807-1842 - Toll Free

[FindIt@GoToAGN.com](mailto:FindIt@GoToAGN.com)

AGN is going Global

